

XC6-3507/XC6-3514/XC6-4517

TELESCOPIC HANDLERS



The main parameters

		XC6-3507	XC6-3514	XC6-4517	unit
Machine weight (± 5%)		7850	10500	13500	kg
Engine power rate		70 (Deutz)	70 (Deutz)	(Cummins QSB4.5) 82	kW
Max. payload		3500	3500	4500	kg
Payload under max. extension		1250	635	490	kg
Max. lifting height (± 100)		7150	13700	16700	mm
Max. outreach (± 100)		3600	9460	12600	mm
Load center distance		600			mm
Swing angle (± 1°)		-3 ~ 65	-4 ~ 73	-4 ~ 73	(°)
Fork decline angle	Forwards(± 1.5)	90			(°)
	Backwards(± 1)	17.5	18	18	(°)
Max. traction force		≧ 55	≧ 48	≧ 73	kN
Gradeability		≧ 40	≧ 28	≧ 33	(°)
Max. travel speed (± 5%)		30	28	35	km/h
Turning radius (outer of the tire)		≦ 3880	≦ 4230	≦ 4860	mm
Brake distance		≦ 8	≦ 6	≦ 10	m
Total length (± 2%)		4995	6290	6890	mm
Total height (± 2%)		2470	2600	2815	
Total width (± 2%)		2250	2500	2500	
Wheelbase (± 2%)		2985	3250	3900	
Tread (± 2%)		1840	1970	2060	
Fork length		1200			

XC6 Series

Comfort drive and easy operation



- Luxury and comfortable cabin with soundproof, thermal insulation, vibration reduction and open visionary.
- Ergonomic joysticks and dashboard layout, suspension seat for operator' s easy operations.
- International brand air-conditioner to ensure proper temperature inside the cabin.
- Equipped with radio, storage grids, cup seats, lighter for human designing.

Safe operation and easy maintenance

- FOPS&ROPS cabin, extinguisher and rescue hammer are equipped to ensure operator's safe operation.



- With leveling function equipped with(XC6-3514/XC6-4517 machine body can swing 10° to the left and right), excellent adaptability for various working sites and working conditions.

- Integrated opening engine hood for easier and quick maintenance.



- Parallel integrated fuse box of centered control for easier and effective inspections.

XC6 Series

Extreme efficient and performance

- Special CARRARO full electrical-control transmissions with compact structure and high transmission efficiency.
- Electrohydraulic proportional control working system for accurate operations.

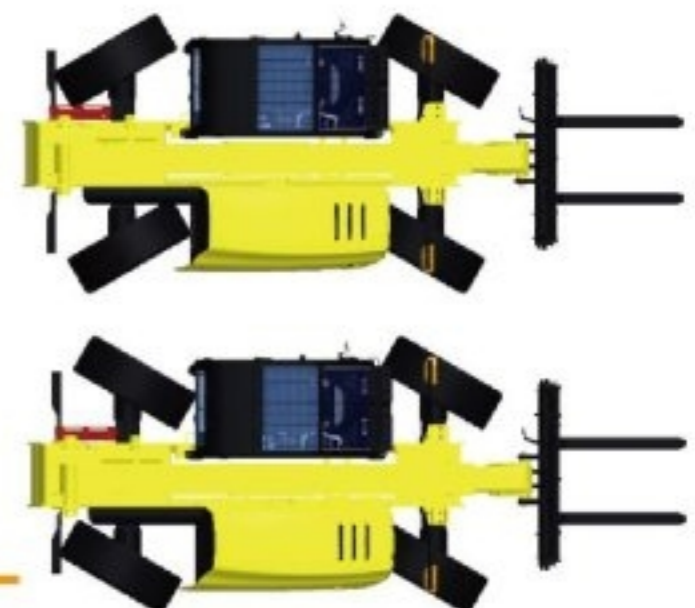


- Auto flow compensation forks during boom swing process to ensure lifting stability and safety at a high position.

- Cummins engine, electro-control, EFI, charge air cooling, high pressure common rail feature less noise, low emission, strong power and big torque storage (XC6-4517) .
- Leading hydrostatic drive system with CVT, which improves drive efficiency to the utmost extent (XC6-3507/XC6-3514) .

High efficient travelling control modes

- Four wheels steering: meets requirements in small space.
- Crab walking mode: meets requirements in narrow space.



Super strong structure and reliability

- Applied FEM analysis on frames and extension arms to reduce stresses and fit harsh working conditions.



XC6-4517 has passed fatigue load and overload tests of 200,000 times

- Applied full hydraulic wet brake system for stable and reliable brake.
- Applied water-proof and anti-dust sealing connectors with reliable performance.

Meets various working conditions.



XC6-4517 telescopic handler backing at the 50 anniversary of diplomatic ties between China and France



XC6-4517 telescopic handler working on a construction site in Gabon



XC6-4517 telescopic handler in tree planting activities

XC6-4517 telescopic handler in a power plant construction in Baoding, Hebei

XC6 Series

Characteristics

- New FOPS&ROPS cabin and integrated opening engine hood.
- Powerful international brand engines; Special CARRARO transmissions and axles for smooth drive.
- Top class full hydraulic wet brake system for reliable brake and safety travelling.
- With leveling function equipped with(XC6-3514/ XC6-4517 machine body can swing 10° to the left and right), excellent adaptability for various working sites and working conditions.
- Optional torque limit system for extreme working conditions.
- Optional aerial working platform, bucket and various tools to meet customer needs.

Performance advantages

- The leading highest lifting height 16.7m.
- Max. speed 38km/h.
- Min. turning radius 3.8m for excellent adaptability.

Industry position

- Business leader of China telescopic handlers.
- Business standards maker of China telescopic handlers.

